



GIVENCHY



PARADISE LOST

THE BUENOS AIRES UNDERWORLD SERVES AS A BACKDROP FOR THE
HIGH DRAMA OF THE PRE-FALL COLLECTIONS

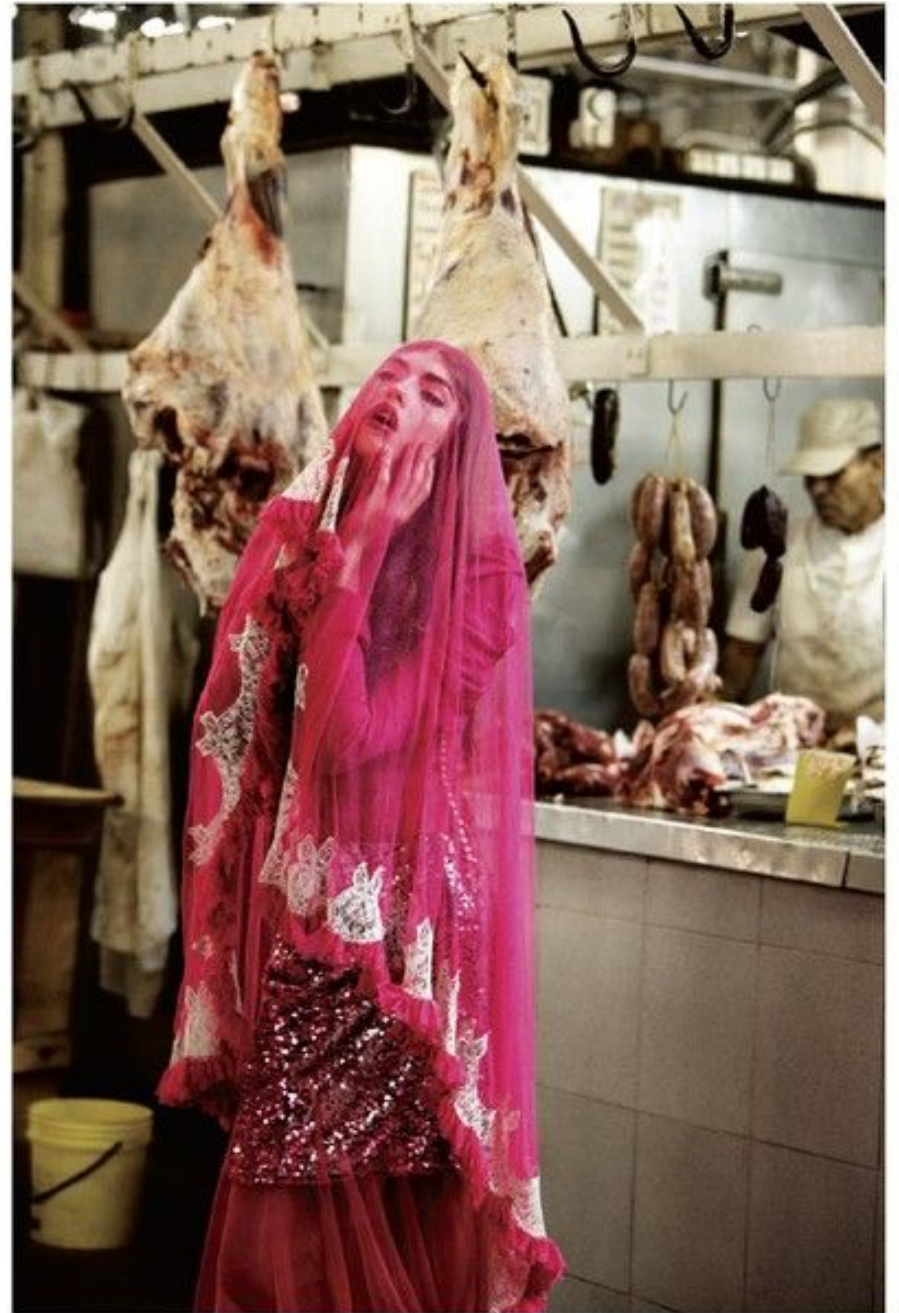
Photography Sebastian Faena
Styling Robbie Spencer



Dress Chanel Paris-Shanghai Mask Kika Halmwheiler Headpiece and beaded marta Pam Hogg
Gloves Marlies Schwab Shoes Alexander McQueen



Dress and Iris Jean Paul Gaultier Shoes Alexander McQueen
 Vet made by stylist



Sequin skirt Dolce & Gabbana Blouse Viktor & Rolf Long dress (worn underneath) John Galliano S/S 2010 Vet Meadham Kirchhoff
 On lips, Lancôme Color Fever Shine Lipcolor in hot nights



Dasha wears
Black Duster dress Michael Kors
Dress with lace detail at neck
(worn underneath) Burberry Prorsum
Long appliqué dress
(worn underneath) Ziad Ghanea

On him,
T-shirt Armani Exchange

Makeup Estelina Nobile and
Sofy Miguens for Lancôme
(Prunboi-Nobile)
Hair Nacho López Fagade (Estudio H)
Model Dasha Cojias (Ford NY)

Photo assistant Sebastián Cuello
Digital assistant Cecilia Larrea,
Victoria Caminos,
Estelina Prunboi-Nobile
Digital assistant Mariana Lopez
Production (Spain) Pineda for
South America Productions
Production manager Bernabé Saez
Retouching Yvonne Inaghi
Special thanks to
the Paris Hotel and Cinema









Gilet sans manches rebrodé
en cuir et fourrure, et mi-bas
en laine, JEAN PAUL GAULTIER.
Veste en jean, PINKO. Chemise
à manches longues en
mousseline de soie rebrodée,
ALBERTA FERRETTI. Short en cuir,
QUEST. Boucles d'oreilles, IRADJ
MONI. Chaussures, GIUSEPPE
ZANOTTI.